



Science. Strategy. Storytelling.

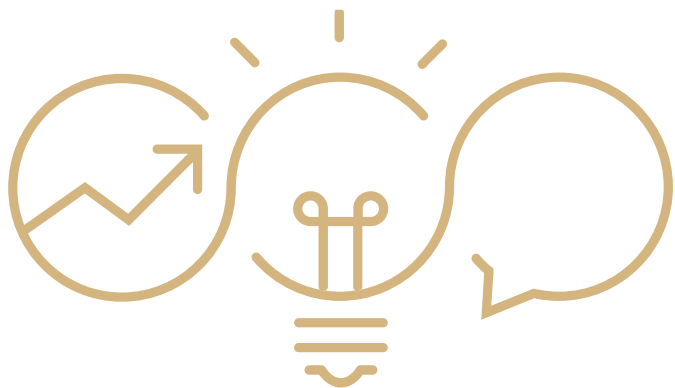


**We exist to
help our clients
create value from
tackling one of
the world's most
fundamental
challenges.**

Who we are

Established in 2008, Edge is a specialist sustainability advisory company focused on Asia-Pacific and the Americas. Our teams are based in Australia, New Zealand, the United States and Chile.

We exist to help our clients create value from tackling one of the world's most fundamental challenges: creating truly sustainable economies and societies. We do this by combining science, strategy and storytelling in a way that gives our clients the confidence to take ambitious action and do well by doing good.



Science. Strategy. Storytelling.



Science.

We believe that sustainability should be evidence-based, and align with what science shows us to be necessary to address the systemic challenges we face.



Strategy.

Sustainability initiatives cannot exist in isolation. To be successful, it's essential that they form part of a coherent strategy, and align with and enhance wider organisational goals.

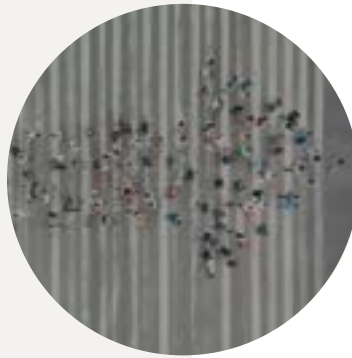


Storytelling.

Stories help us to influence, teach and inspire. Sustainability stories, well told, create change that is bigger, faster and more valuable to the organisations behind them.

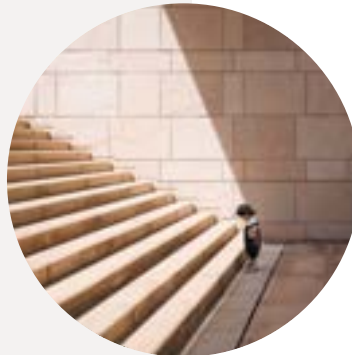
What we do

We support our clients by working across six areas. In bringing together these diverse services, we are perfectly placed to guide clients from first steps to sustainability leadership, and from strategy through to on-the-ground implementation.



Sustainability leadership and communications

We work with our clients to create the next wave of sustainability leaders, helping them to translate their sustainability efforts into business value.



ESG and Sustainability strategy

Our strategy team exists to help clients establish a clear vision of what sustainability means to them and their stakeholders, and to put in place coherent, pragmatic action plans to successfully achieve their aims.



Circular economy and lifecycle thinking

Edge has always put life cycle thinking and holistic sustainability at the heart of what we do with our clients. The growing focus on creating a circular economy has brought this approach to the fore.

What we do



Sustainable and ethical procurement

For most organisations, it's their supply chains rather than their operations that have the biggest social and environmental impacts. We work with clients to identify risk hotspots, optimise opportunities and embed sustainability into procurement practices and supplier engagement.



Carbon and climate resilience

Climate change is one of the defining challenges of our time. We guide our clients' efforts to mitigate the risks and seize the opportunities posed by a changing climate and the transition to a low carbon economy.



Sustainability delivery

We're widely recognised as leaders in the field of sustainability advisory for property and infrastructure projects, providing support from strategic business case to on-the-ground delivery.

Our memberships, partnerships and accreditations

As an organisation, we put great emphasis on playing an active role in the sustainability community: supporting industry initiatives; contributing technical expertise; and operating within recognised frameworks.

Memberships



Accreditations



Partnerships

TECHNICAL
SUPPORTER



Why Edge?

You may think all sustainability consultancies are the same. We'd like to think otherwise. Here are a few of things that set us apart...



Unmatched breadth and depth

Our team includes specialists from a wide range of disciplines, with project experience that spans many sectors. As a result, we can help you no matter where you are on your sustainability journey.



What you see is what you get

The people whose photos you see in our proposals are the same ones that will work on your project.

If we've promised you our top consultants, that's who you'll get.



We're thought leaders

We want to change the world. That means we continuously invest in research and innovation, and are regularly at the forefront of industry initiatives. We then bring that expertise back into projects to benefit you.



We practice what we preach

It's no good telling you how you can do better if we're not doing it ourselves. That's why we're a BCorp, have a verified Science Based Target, and are striving to become a zero-waste business.



International capability, local knowledge

Over the years, we've worked with leading businesses from all over the world. We know what global best practice looks like, but we also understand the importance of your specific, local context.

Our global leadership team



Jonas Bengtsson
Co-Founder and
Chief Executive



Dr. Mark Siebentritt
Executive Director,
and Managing
Director, Edge
Tech



Olivia Tyler
Managing Director
(Australia &
New Zealand)



Michelle Senerman Finkelstein
Managing Director
(Chile)



Bryan Sheehan
Managing
Director
(US)



Ashleigh Gay
Head of
Sustainability
Leadership and
Communications



Max Van Biene
Head of ESG &
Sustainability
Strategy



Jenni Philippe
Head of
Circular Economy
and Lifecycle
Thinking



Tanya Harris
Head of
Sustainable
and Ethical
Procurement



Maisie Auld
Head of Carbon
and Climate
Resilience



Varun Potbhare
Head of
Sustainability
Delivery



Richard Griffiths
Head of
Industry
Engagement

“Supply chains continue to be one of the most important levers for business to create positive impact in the world.”

– UN GLOBAL COMPACT

Sustainable and ethical procurement

Across the sustainability spectrum – from Science Based Targets to circular economy and modern slavery mitigation – one key theme always emerges: every dollar you spend has an impact. A big proportion of most organisations’ environmental and social impacts derive from their operations and supply chains, and as such procurement lies at the heart of any effective sustainability strategy and implementation.

Our job is to make navigating what can feel like a daunting task manageable and achievable. From the outset, our services are designed to help you clearly understand your social and environmental risks, allowing you to focus on those that matter the most. We take the time to understand our client’s teams, their challenges and needs to ensure we deliver solutions that are realistic and accepted. Our experience spans a wide range of organisations – from global events and multinational corporations to local councils – ensuring that we are well placed to help clients of all kinds build the systems and processes they need to meet best practice standards, align with relevant legislation and create positive change.

Sustainable and Ethical Procurement

Sustainable procurement

- Supply chain risk assessment
- ISO20400/ESG gap analysis and alignment
- Sustainable procurement strategy development and implementation
- Sustainable category management plans
- Supplier engagement, awareness and capacity building
- Environmental hotspot analysis and benchmarking
- Whole of life cost/triple bottom line assessment

Modern slavery

- Modern slavery and human rights risk assessment and prioritisation
- Risk mitigation roadmaps and implementation support
- Remediation and other policy development
- Reporting and evaluation frameworks
- Modern slavery statements
- Board, staff and supplier training

Social procurement

- Social procurement opportunities analysis
- Social procurement framework/policy development and implementation
- Product social impact analysis
- Social impact measurement

Get in touch

Tanya Harris, Head of Sustainable and Ethical Procurement (Acting)
tanya.harris@edgeenvironment.com



When you get this right

Collaboration Benefits

- Reputation and trust
- Moving from transactional to strategic supply partnerships
- Reduced internal effort through shared actions
- Client of choice for innovation partnerships
- Strengthened commercial relationships “know your supplier”
- Continuous improvement through collective knowledge
- Identify and leverage opportunities

Environmental Benefits

- 60-80% of emissions sit in the supply chain (GHG reduction)
- Increased performance of assets
- Hazardous chemical reduction
- Achieve 1.5c compatible SBTi
- Circular economy

Social Benefits

- Increased supply chain transparency – beyond tier 1
- Improved labour conditions
- Reduction in inequity
- Targeted economic empowerment opportunities
- Positive community impacts

Economic Benefits

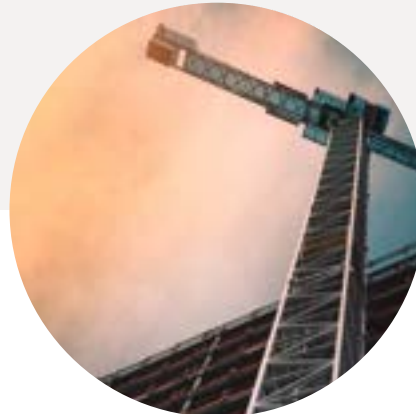
- Early and proactive identification and management of risks (cost avoidance)
- Increased organisation and supply chain resilience (profitability)
- Waste reduction and efficiency optimisation
- Strengthened governance (ESG) and credibility in claims
- Attractive green financing options
- Meet and exceed customer expectations (growth)

Our projects



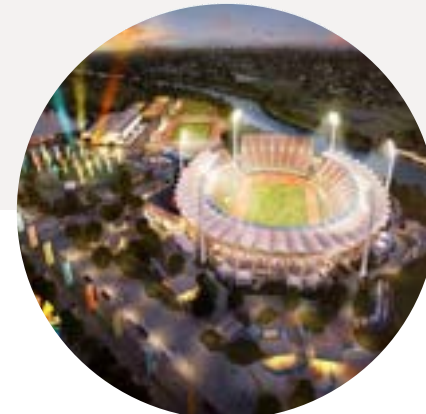
Vicinity Centres // Sustainable Supply Chains

Vicinity is the second largest listed manager of Australian retail property, managing \$27 billion in assets. Edge was engaged to help progress its sustainable procurement agenda, reviewing its practices against the requirements of the Modern Slavery Act, and ISO20400. The project resulted in a series of recommended actions and a prioritised implementation plan.



Property Council of Australia // Supplier Pre-qualification Platform

To help increase efficiency in complying with the Modern Slavery Act, a group of the PCA's largest members commissioned Informed365 to develop a common supplier platform. Edge provided technical support in its development, including a risk analysis of a typical property company's supply chain, and development of a detailed supplier questionnaire.



Gold Coast Commonwealth Games // Sustainable Procurement

Edge were commissioned over a four-year period to provide sustainable procurement advisory services to GOLDOC. The project included detailed hotspot analysis of the games' supply chain, assessment of systems and processes, development of category management plans, and creation of a sourcing code and other guidance documents.



CASE STUDY: METCASH

Modern Slavery Program

Metcash asked for our support to develop and support implementation of a modern slavery mitigation program and develop their first and second Modern Slavery Statements.

We identified the gaps & opportunities to efficiently build on what is already in place and delivered a modern slavery action plan to establish a consistent pathway forwards. We continue to support Metcash with the implementation of the action plan including engaging suppliers using SEDEX supplier assessment and audits, continuous improvement in the due diligence framework, development and revision of internal policies, internal and external e-learning modules, supplier roundtable consultations and the remediation framework.

Next steps is the integration of Sustainable Procurement ISO20400 practices!

WWW.METCASH.COM

2020 MODERN SLAVERY STATEMENT

This statement is in respect of the financial year ended 30 April 2020 and represents the first Modern Slavery statement by Metcash under the Modern Slavery Act 2018.

Wine
 Chocolate/Cocoa
 Baby products
 Spirits
 Cleaning products
 Frozen/chilled food
 Beer
 Canned products
 Meat and poultry
 Vanilla
 Sugar
 Dairy products
 Palm oil
 Tea
 Timber for pallets
 Nuts
 Seafood
 Coffee
 Fruits
 Pet food
 Vegetables
 Grains & cereals

Low slavery prevalence Medium slavery prevalence High slavery prevalence Very high slavery prevalence

Metcash Limited 2020 Modern Slavery Statement

03



CASE STUDY: BINGO

Responsible Sourcing Strategy

BINGO were clear they intend to maintain a sustainability leadership position in the market and understand the importance of responsible sourcing to achieve that.

The Edge team have worked closely with BINGO to develop their comprehensive Responsible Sourcing Strategy, aligned to ISO20400. This included supplier questionnaires and engagement on sustainability and modern slavery issues, a due diligence framework and appropriate risk management approach having mapped modern slavery and carbon impact risks to the relevant issues for key procurement categories and suppliers.

Having a practical roadmap of action that is prioritised by issues and risks, supported by the new Stakeholder Engagement Strategy for ongoing engagement, education and partnerships is just the start of the BINGO responsible sourcing journey and our ongoing partnership.



Responsible Sourcing Program

BINGO's methodology to understand our risk profile in our supplier base utilises five risk information sources to score and assess the likelihood of modern slavery risk for each procurement category. The first four information sources are databases that provide indicators and scores relating to modern slavery risk by sector and country. The fifth source of information is a literature review and provides insight into risks specific to the Australian context and relevant sub-categories of products and services.

The risk analysis used to assess the likelihood of an issue occurring uses market models that trace commodities and services across supply chains.



Contact us



Sydney

Suite 501, 39 East Esplanade
Manly, NSW 2095, Australia

+61 2 9438 0100

E-mail:
info@edgeenvironment.com



Adelaide

60 Halifax Street
Adelaide. SA 5000, Australia

+61 8 8232 4823

E-mail:
info@edgeenvironment.com



Melbourne

80 Market Street
South Melbourne, VIC 3205, Australia

+61 2 9438 0100

E-mail:
info@edgeenvironment.com



Santiago

Santa Magdalena 10, Oficina 26,
Providencia, Santiago, Chile.

+56 9 7703 2645

Email:
michelle@edgechile.com



Boston

269 Cordaville Road,
Southborough, MA 01772, USA

+1 774 206 9172

E-mail:
info@edgeenvironment.com



Auckland

Generator NZ, 12 Madden
Street, Auckland 1010, NZ

E-mail:
info@edgeenvironment.com